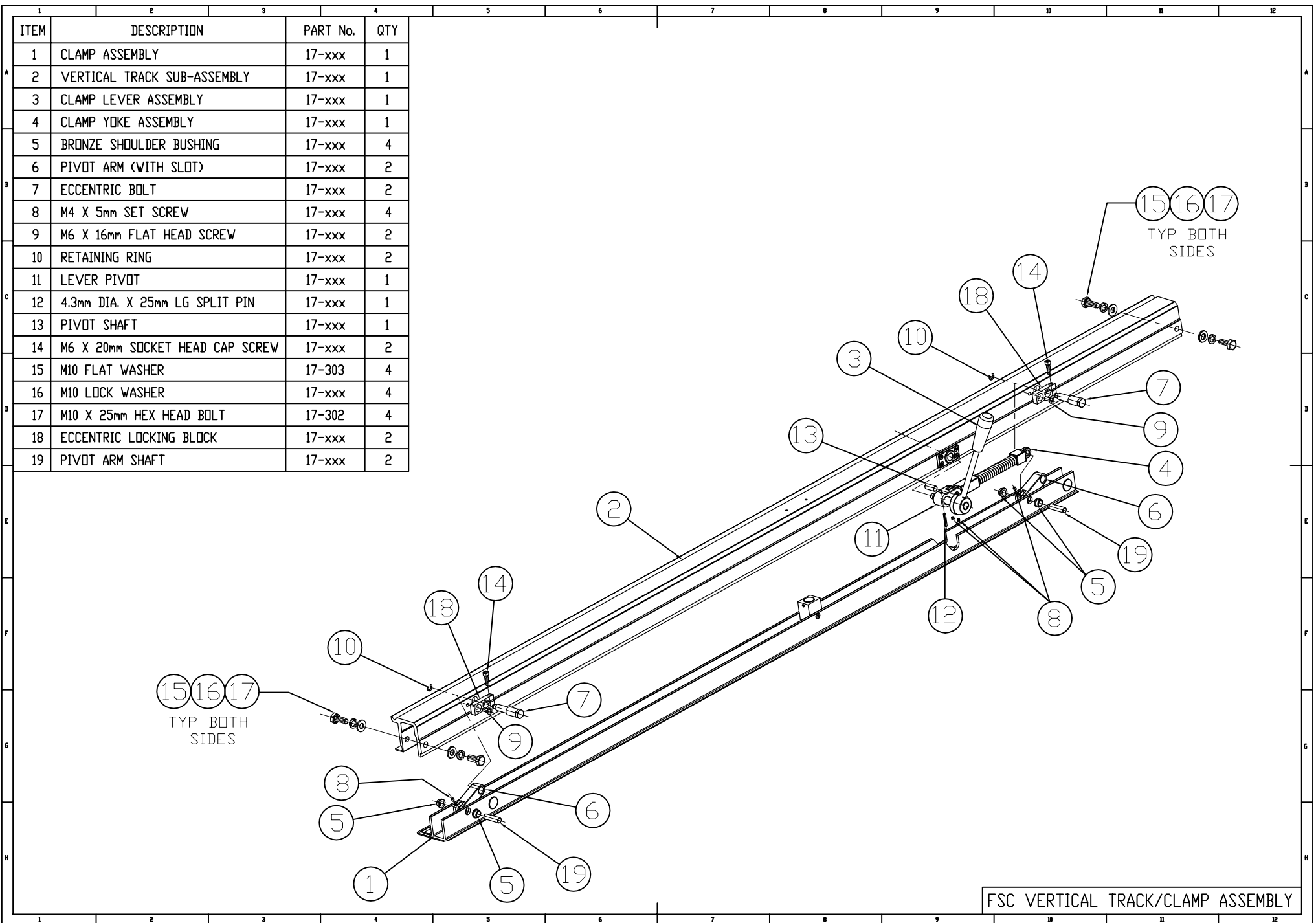


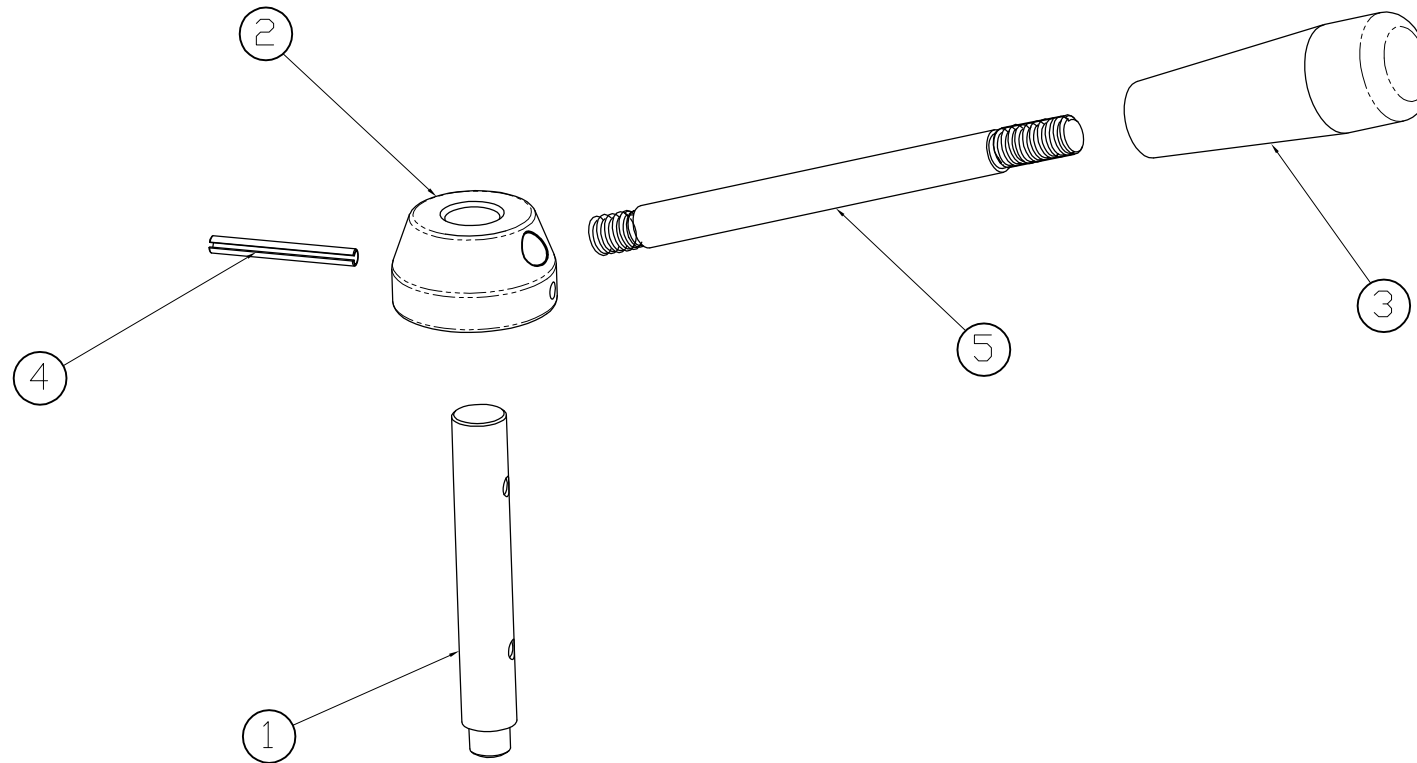
- Notes:
1. Assembly per the drawing.
 2. Qty for item #11: 0~3pcs
 3. Torsional force for screws: 15kgf min
 4. Old No.: P327-19.0

1	AS-00002216-	Cutting Head SUB-Assy.	1
2	AS-00002215-	Rocker Arm SUB-Assy	1
3	AS-00002217-	Slide EXT.Assy.	1
4	MA-00001082-	Handle Flat Head Screw	4
5	TU-00001087-	Bronze Bushing	1
6	MA-00001088-	Compression Spring	1
7	MA-00001047-	Retaining Ring	4
8	TU-00001089-	Shaft-Trigger	2
9	CA-00001008-	Triger Sand Casting	1
10	MA-00001090-	Pillar Plst Knob	1
11	MA-00001211-	t=0.05mm SS	0~3
	MA-00001212-	t=0.10mm SS	0~3
	MA-00001214-	t=0.15mm SS	0~3
Item	ERP No.	Description	Qty

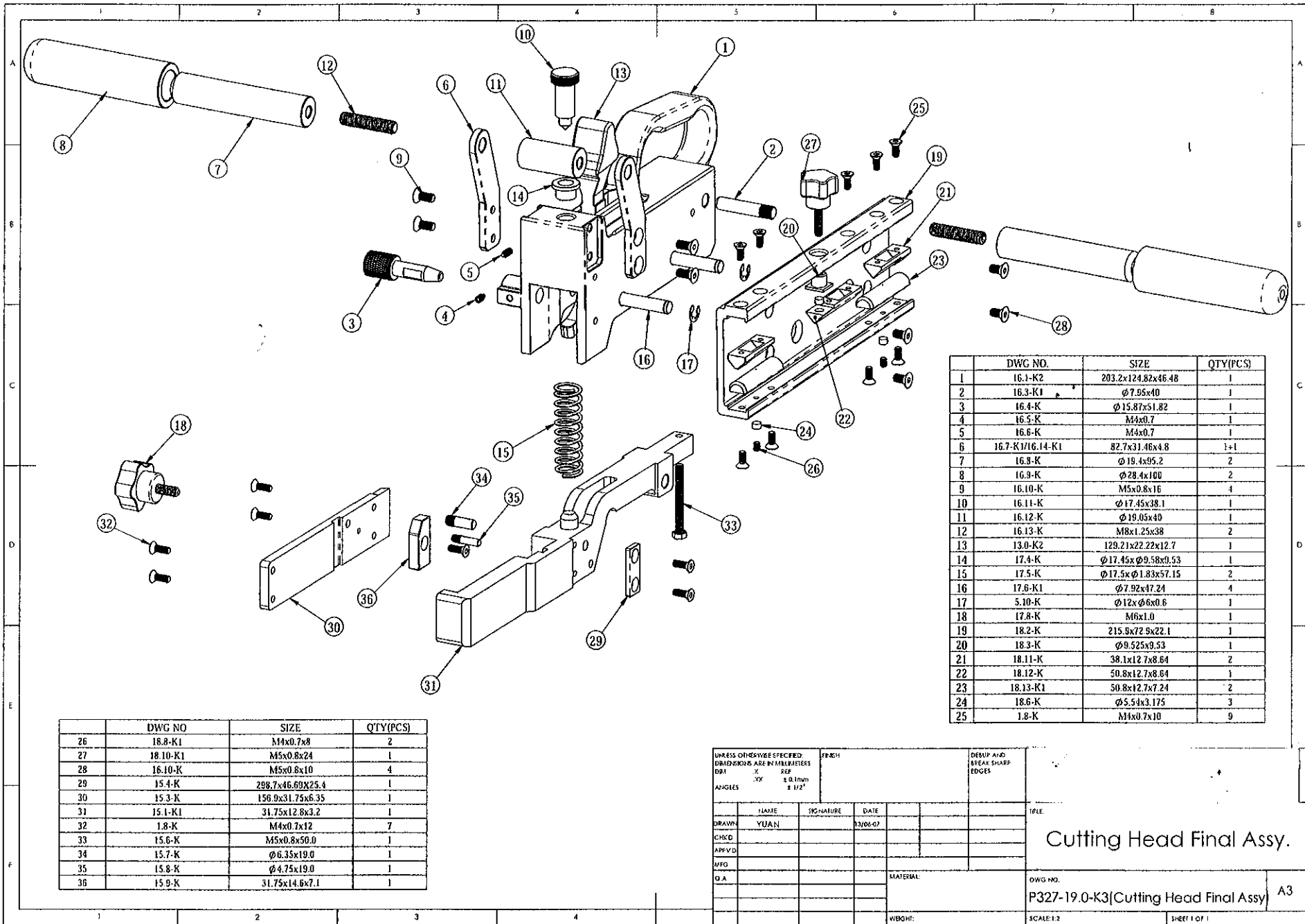
MODEL NO.	DWG NO.
P327	AS-00002218-00
TITLE:	
FSC Cutting Head Final Assy.	



ITEM	DESCRIPTION	PART No.	QTY
1	PIVOT HUB SHAFT	17-162	1
2	PIVOT HUB	17-163	1
3	CLAMP LEVER PLASTIC HANDLE	17-165	1
4	PIVOT HUB SPRING PIN	17-161	1
5	CLAMP LEVER SHAFT	17-164	1

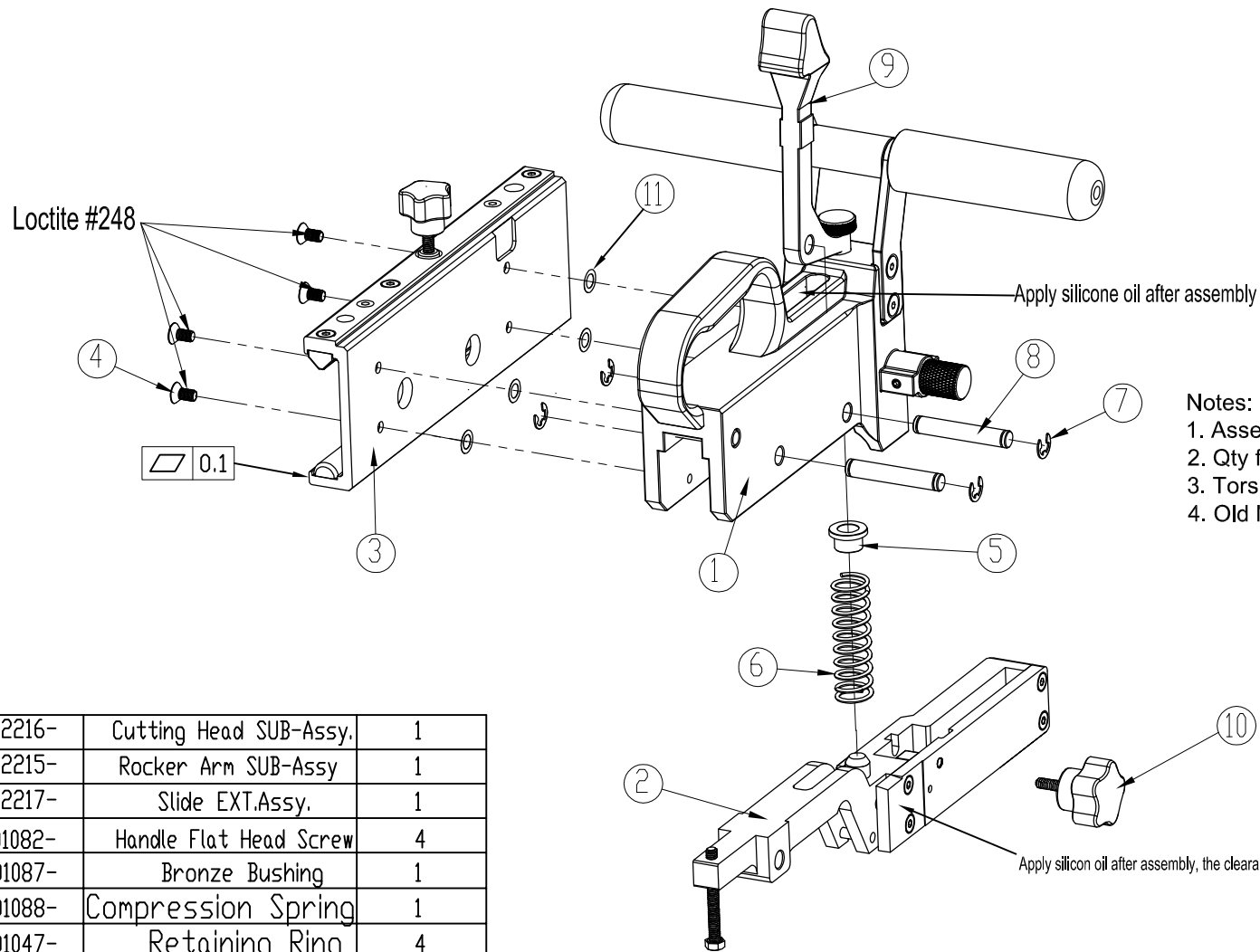


FSC CLAMP LEVER ASSEMBLY



DWG NO.	SIZE	QTY(PCS)
1	16.1-K2	203.2x124.82x46.48
2	16.3-K1	∅7.95x40
3	16.4-K	∅15.87x51.82
4	16.5-K	M4x0.7
5	16.6-K	M4x0.7
6	16.7-K1/16.14-K1	82.7x31.46x4.8
7	16.8-K	∅19.4x95.2
8	16.9-K	∅28.4x100
9	16.10-K	M5x0.8x16
10	16.11-K	∅17.45x38.1
11	16.12-K	∅19.05x40
12	16.13-K	M8x1.25x38
13	13.0-K2	129.21x22.22x12.7
14	17.4-K	∅17.45x∅9.58x9.53
15	17.5-K	∅17.5x∅1.83x57.15
16	17.6-K1	∅7.92x47.24
17	5.10-K	∅12x∅6x0.6
18	17.8-K	M6x1.0
19	18.2-K	215.9x72.9x22.1
20	18.3-K	∅9.525x9.53
21	18.11-K	38.1x12.7x8.64
22	18.12-K	50.8x12.7x8.64
23	18.13-K1	50.8x12.7x7.24
24	18.6-K	∅5.54x3.175
25	1.8-K	M4x0.7x10

UNLESS OTHERWISE SPECIFIED: DIMENSIONS ARE IN MILLIMETERS DR1 X REF S 0.1mm ± 1/2° ANGLES		DATE	DESIGN AND HEAT SHARP EDGES
NAME	SIGNATURE	DATE	TITLE
DRAWN	YUAN	03/06-07	Cutting Head Final Assy.
CHKD			
APPVD			
WFO			
Q.A		MATERIAL:	DWG NO.
			P327-19.0-K3(Cutting Head Final Assy) A3
		WBOHT:	SCALE:1:2
			SHEET 1 OF 1



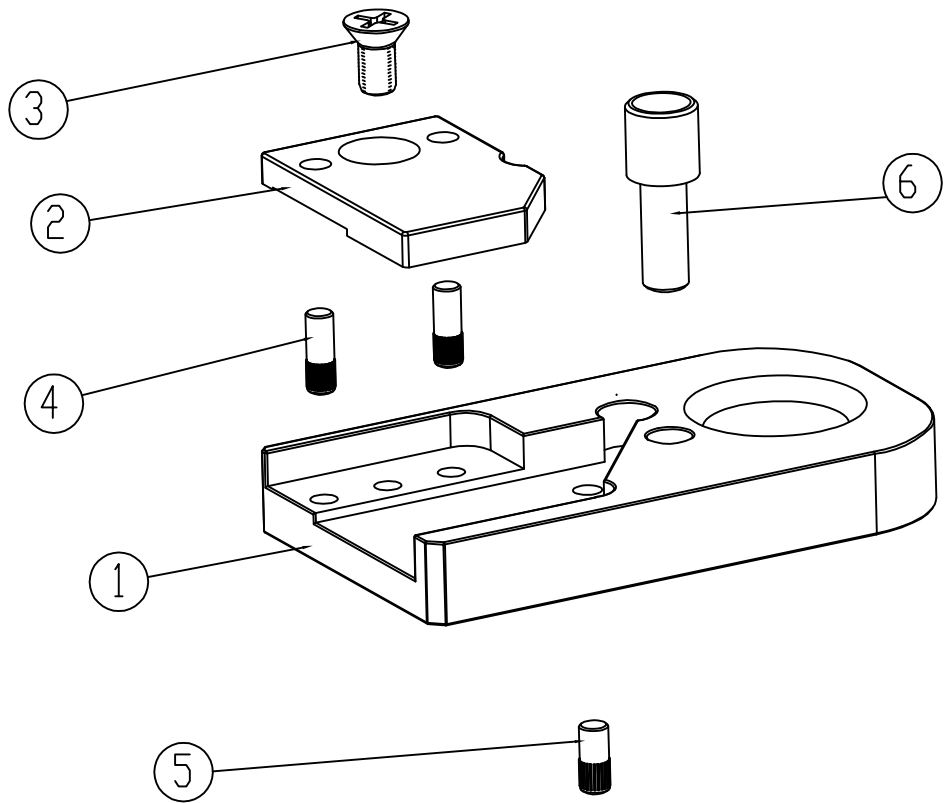
Notes:

1. Assembly per the drawing.
2. Qty for item #11: 0~3pcs
3. Torsional force for screws: 15kgf min
4. Old No.: P327-19.0

1	AS-00002216-	Cutting Head SUB-Assy.	1
2	AS-00002215-	Rocker Arm SUB-Assy	1
3	AS-00002217-	Slide EXT.Assy.	1
4	MA-00001082-	Handle Flat Head Screw	4
5	TU-00001087-	Bronze Bushing	1
6	MA-00001088-	Compression Spring	1
7	MA-00001047-	Retaining Ring	4
8	TU-00001089-	Shaft-Trigger	2
9	CA-00001008-	Triger Sand Casting	1
10	MA-00001090-	Pillar Plst Knob	1
11	MA-00001211-	t=0.05mm SS	0~3
	MA-00001212-	t=0.10mm SS	0~3
	MA-00001214-	t=0.15mm SS	0~3
Item	ERP No.	Description	Qty

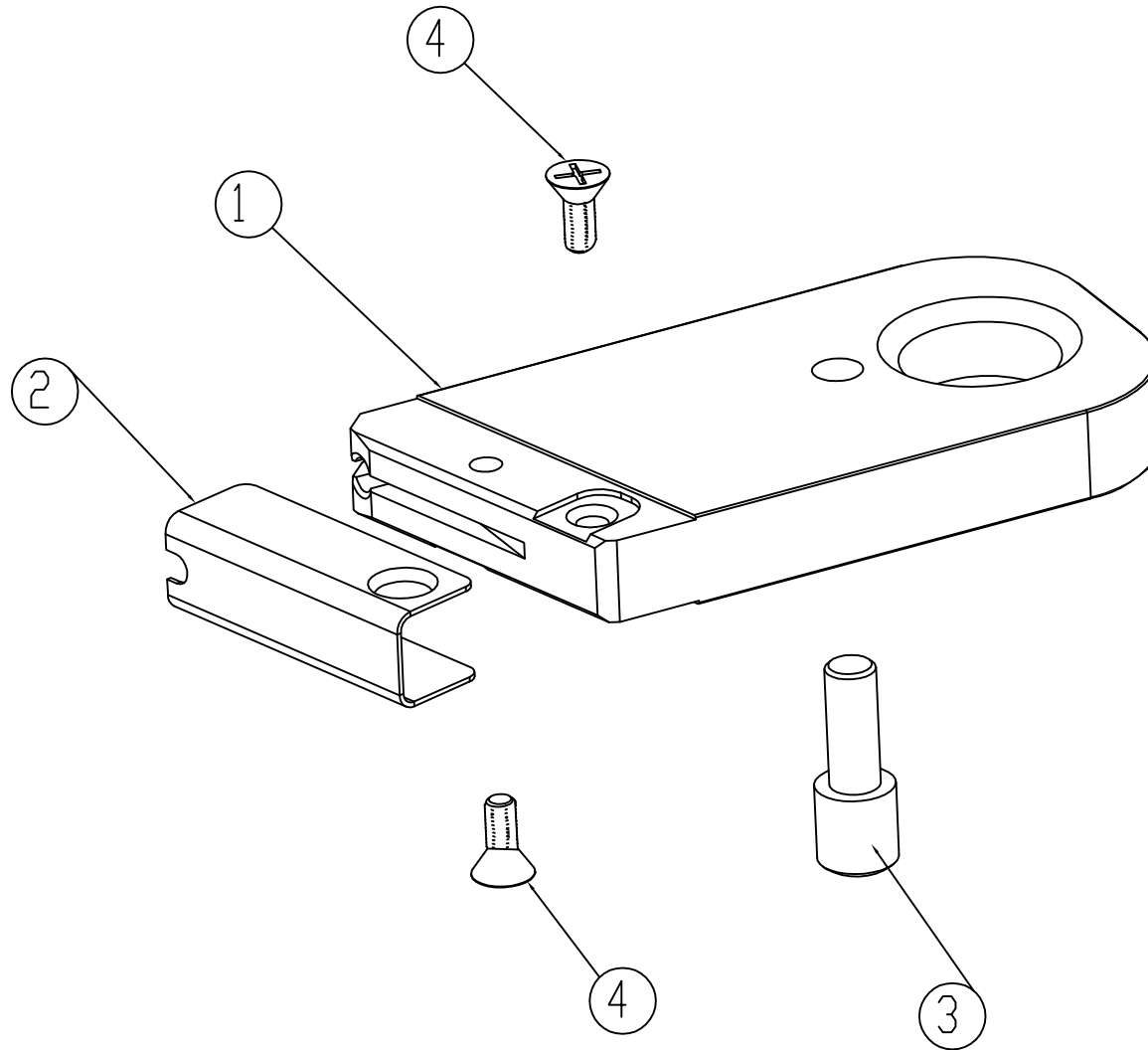
MODEL NO.	DWG NO.
P327	AS-00002218-00
TITLE:	
FSC Cutting Head Final Assy.	

ITEM	DESCRIPTION	PART No.	QTY
1	1/4" BLADE HOLDER	17-xxx	1
2	BLADE CLAMP PLATE	17-xxx	1
3	M4 X 8mm FLAT HEAD SCREW	17-259	1
4	3mm DIA. X 9mm GROOVE PIN	17-xxx	2
5	3.18mm DIA. X 7.5mm GROOVE PIN	17-xxx	1
6	POST STUD	17-257	1



FSC 1/4 BLADE HOLDER ASSEMBLY

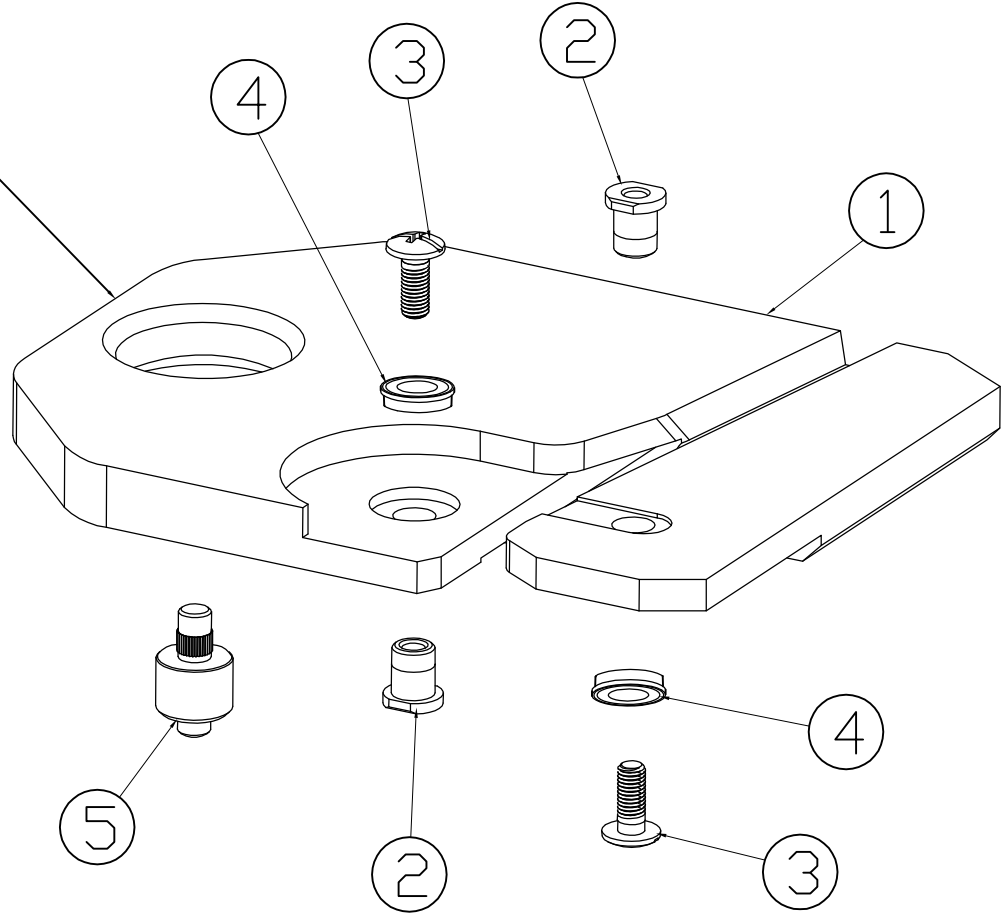
ITEM	DESCRIPTION	PART No.	QTY
1	GLASS SCORING TOOL HOLDER	17-xxx	1
2	WEAR RAMP	17-xxx	1
3	POST STUD	17-257	1
4	M3 X 8mm FLAT HEAD SCREW	17-xxx	1



FSC GLASS HOLDER ASSEMBLY

ITEM	DESCRIPTION	PART No.	QTY
1	ALUM SHEET TOOL HOLDER	17-xxx	1
2	WHEEL BEARING STUD/POST	17-229	2
3	WHEEL HOLDER SCREW	17-231	2
4	WHEEL BEARINGS (SET OF TWO)	05-226	1 SET
5	POST STUD - WHEEL HOLDERS	17-xxx	1

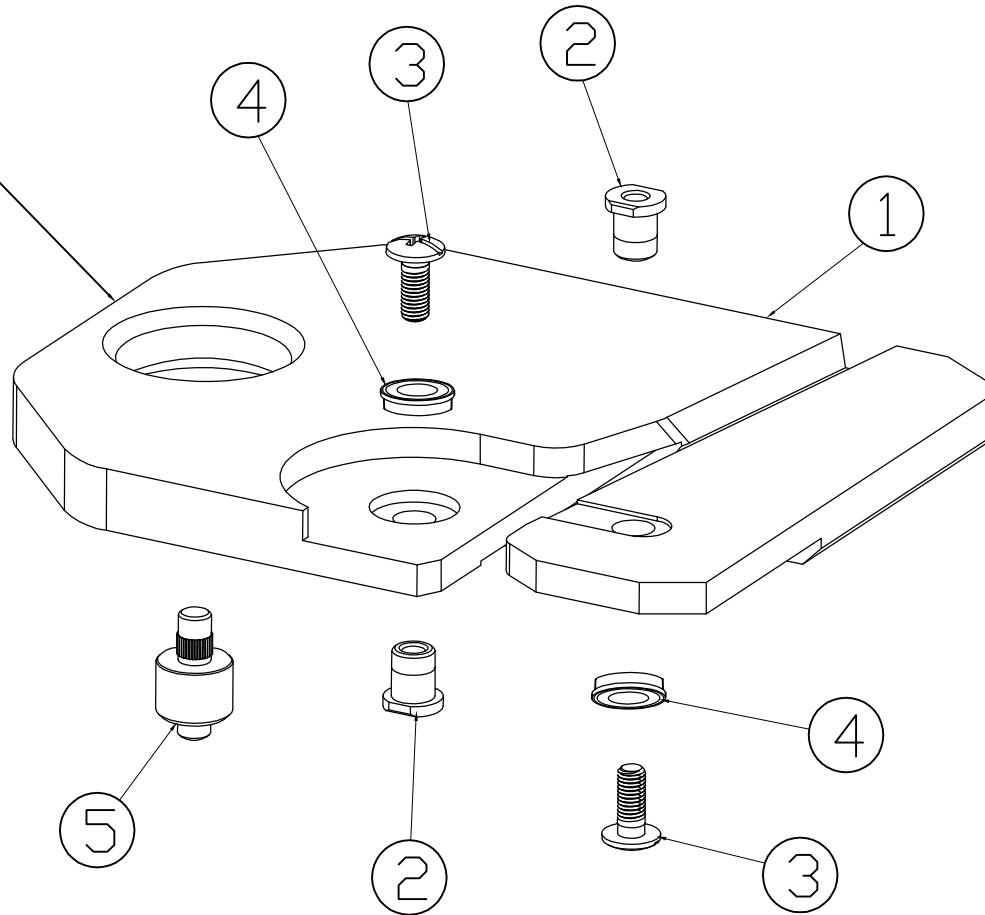
ALUM SHEET



FSC ALUM SHEET HOLDER ASSEMBLY

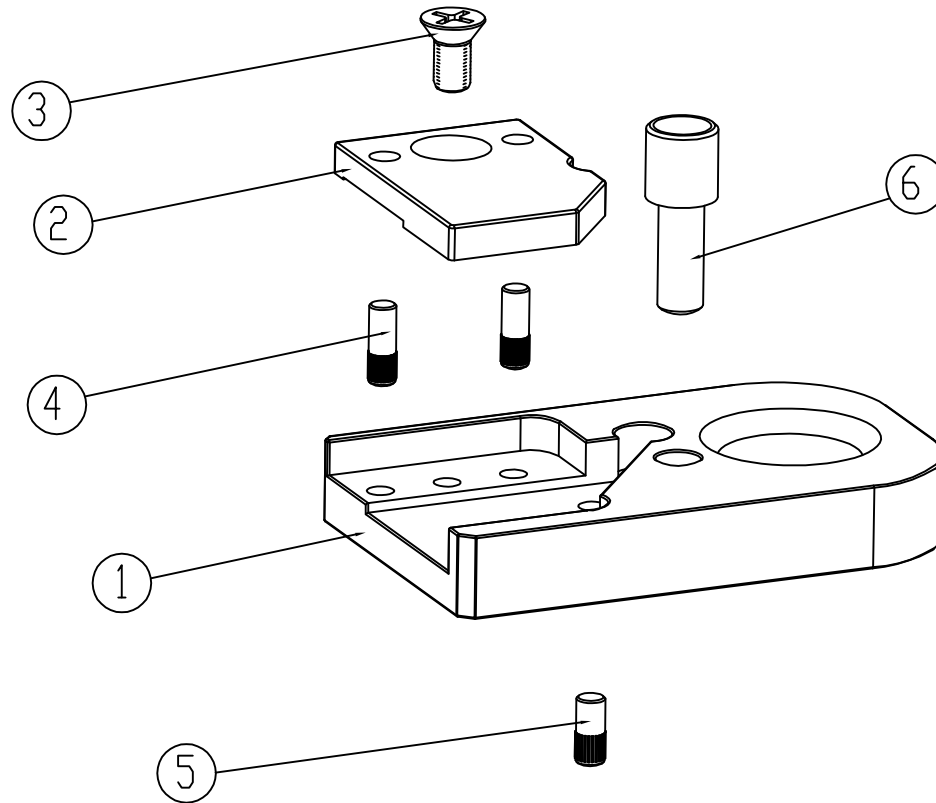
ITEM	DESCRIPTION	PART No.	QTY
1	ALUM COMPOSITE TOOL HOLDER	17-xxx	1
2	WHEEL BEARING STUD/POST	17-229	2
3	WHEEL HOLDER SCREW	17-231	2
4	WHEEL BEARINGS (SET OF TWO)	05-226	1 SET
5	POST STUD - WHEEL HOLDERS	17-xxx	1

ALUM COMPOSITE



FSC ALUM COMPOSITE HOLDER ASSEMBLY

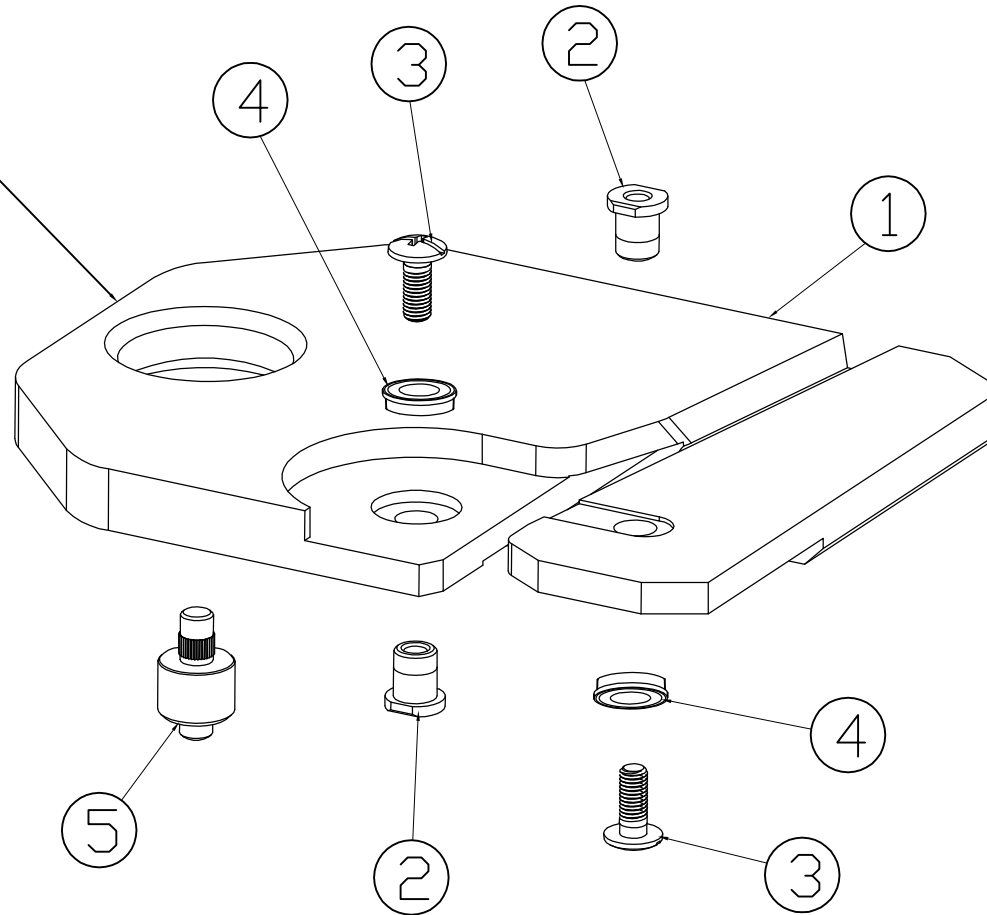
ITEM	DESCRIPTION	PART No.	QTY
1	1/2' BLADE HOLDER	17-xxx	1
2	BLADE CLAMP PLATE	17-xxx	1
3	M4 X 8mm FLAT HEAD SCREW	17-259	1
4	3mm DIA. X 9mm GROOVE PIN	17-xxx	2
5	3.18mm DIA. X 7.5mm GROOVE PIN	17-xxx	1
6	POST STUD	17-257	1



FSC 1/2' BLADE HOLDER ASSEMBLY

ITEM	DESCRIPTION	PART No.	QTY
1	ALUM SHEET TOOL HOLDER	17-xxx	1
2	WHEEL BEARING STUD/POST	17-229	2
3	WHEEL HOLDER SCREW	17-231	2
4	WHEEL BEARINGS (SET OF TWO)	05-226	1 SET
5	POST STUD - WHEEL HOLDERS	17-xxx	1

ALUM SHEET



FSC ALUM SHEET HOLDER ASSEMBLY